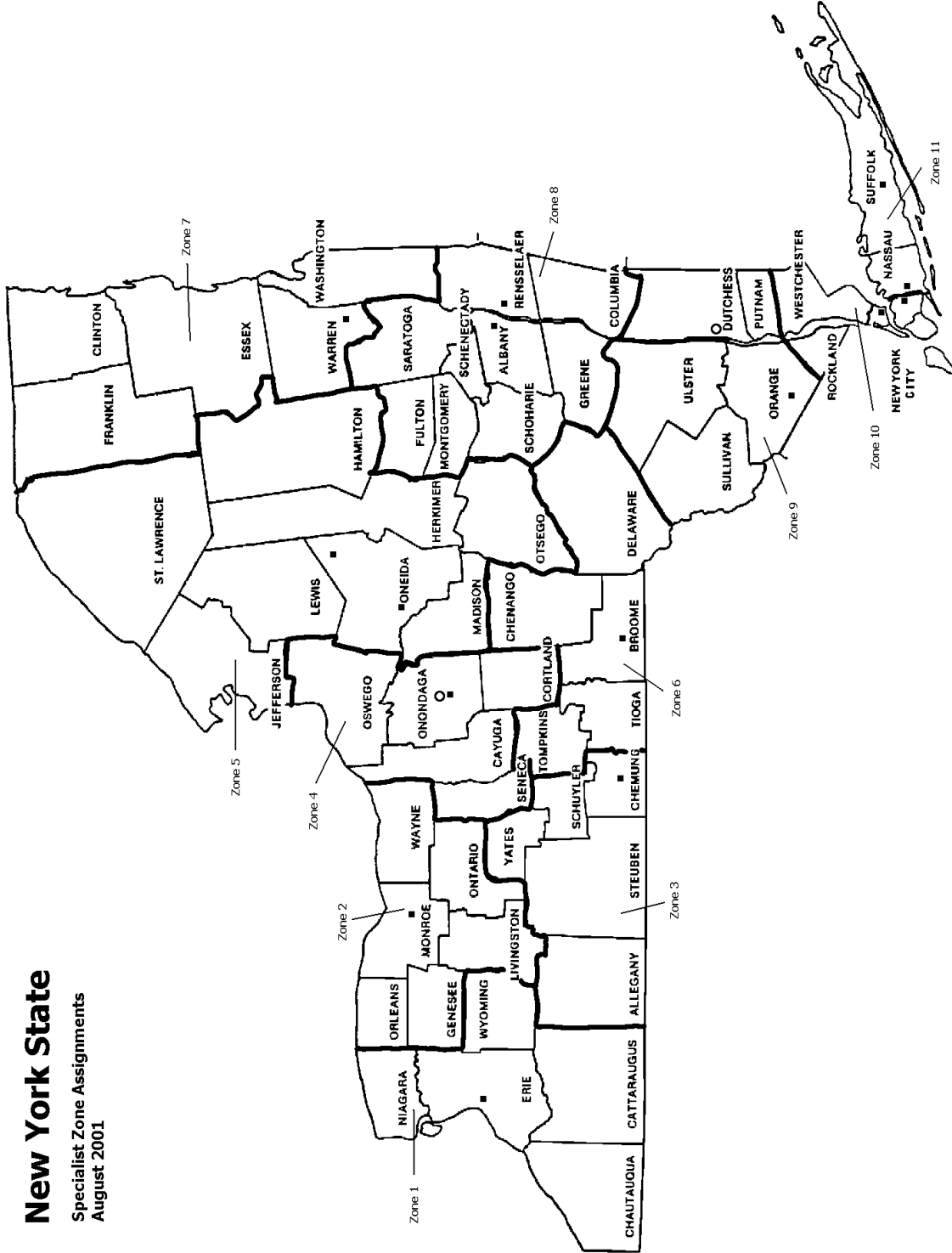




Quality Manual

NYS ZONE MAP

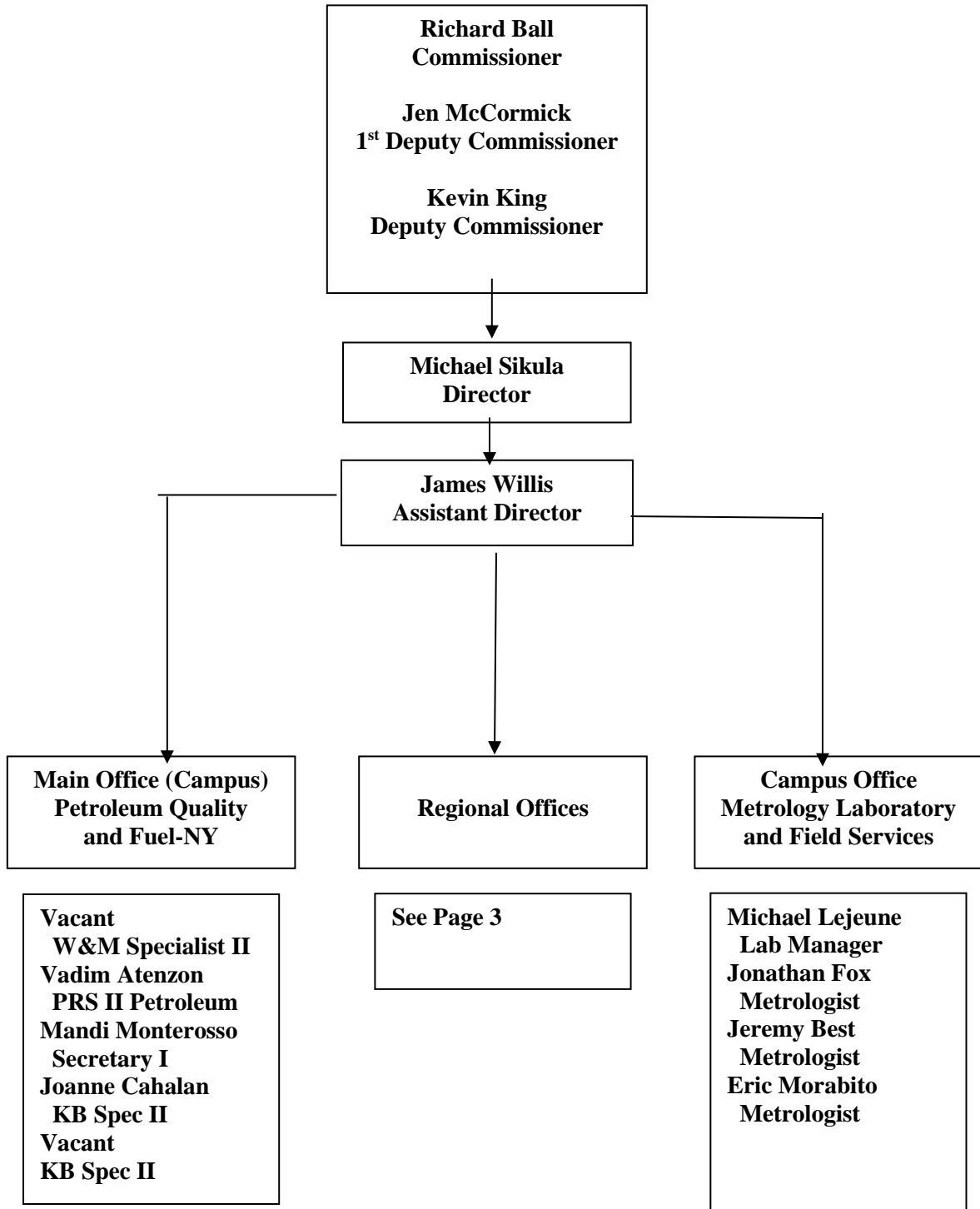


New York State
Specialist Zone Assignments
August 2001



Quality Manual

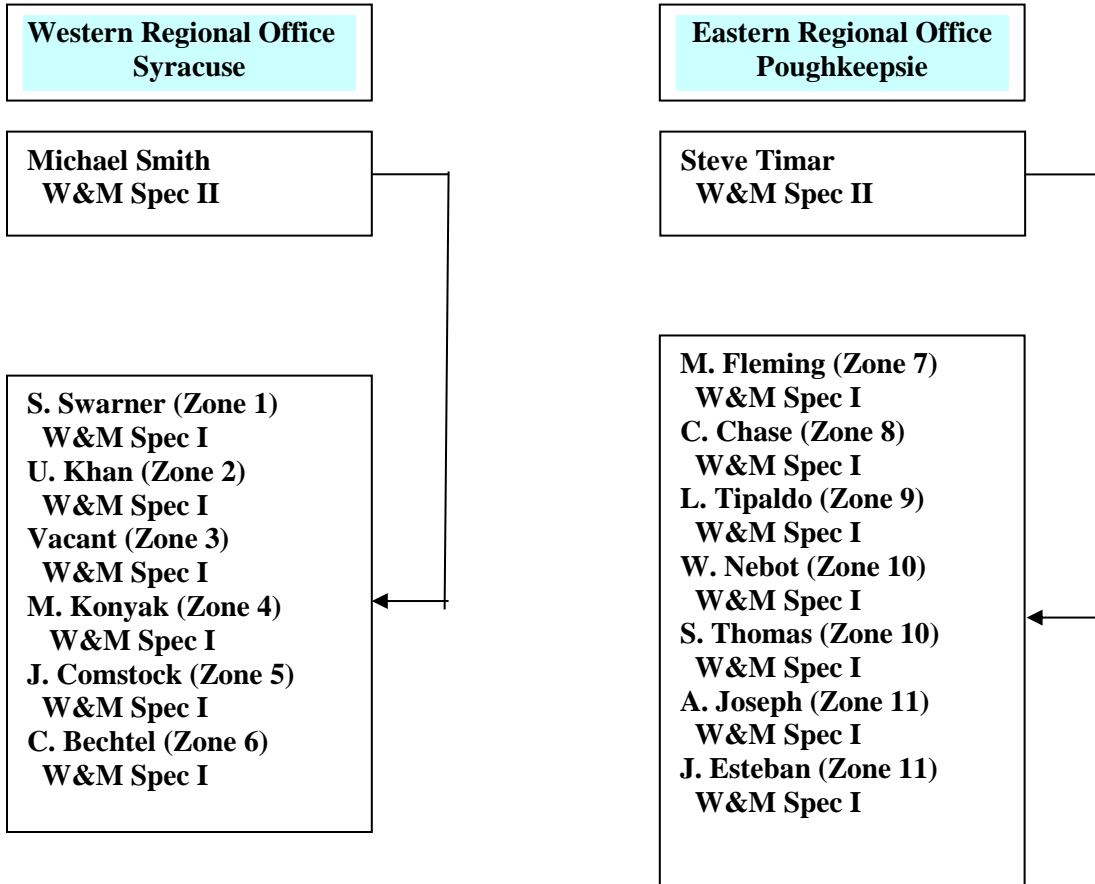
**NYS Weights and Measures
Organization Chart**





Quality Manual

**Organization Chart
(continued)**



Special Details

Highway Weight Enforcement (WEAP)
Liquid Propane Gas (LPG)
NYS 100/10 gallon Prover
Consumer Complaints
Training Program

Special Details

Large Capacity Scales (VS)
Terminal Rack Meter (TRM)
Fuel NY Program
Consumer Complaints
Training Program



Quality Manual

Appendix A State Offices and Personnel	Issued: 05/31/2019	Page 4 of 7
--	--------------------	-------------

A. STATE OFFICES AND PERSONNEL

OFFICES

TELEPHONE

CENTRAL
Bureau of Weights and Measures
10B Airline Dr.
Albany, New York 12235

518 - 457-3146
Fax 518 - 457-2552

Email agmweigh@agriculture.ny.gov

CAMPUS/METROLOGY LAB
Bureau of Weights and Measures
6 Harriman Campus Rd.
Albany, New York 12206

518 - 457-3452
Fax 518 - 457-2552

Email weighlab@agriculture.ny.gov

WESTERN
New York State Fairgrounds
Bureau of Weights & Measures
581 State Fair Blvd., Bldg. 40
Syracuse, New York 13209

315 - 487-2250
Fax 315 - 487-2408

Email weighstyr@agriculture.ny.gov

EASTERN
Eleanor Roosevelt State Office Building
Bureau of Weights & Measures
4 Burnett Blvd., Rm. 216
Poughkeepsie, New York 12603

845 - 437-5151
Fax 845 - 437-5153

Email weighpou@agriculture.ny.gov

Office Personnel

CENTRAL/CAMPUS OFFICE

Michael J. Sikula, Director
James Willis, Assistant Director
Michael Lejeune, Lab Manager
Jeremy Best, Metrologist
Jonathan Fox, Metrologist
Eric Morabito, Metrologist (NTEP)
Vadim Atenzon, Program Research Spec. II
Mandi Monterosso, Secretary I
Joanne Cahalan, Keyboard Specialist II
Vacant, Keyboard Specialist II

Cell 518-859-5938
Email mike.sikula@agriculture.ny.gov

WESTERN OFFICE

Michael Smith, Specialist II

Cell 716-572-1741
Email michael.smith@agriculture.ny.gov

EASTERN OFFICE

Steve Timar, Specialist II

Cell 718-614-2780
Email steve.timar@agriculture.ny.gov



Quality Manual

Appendix A State Offices and Personnel	Issued: 05/31/2019	Page 5 of 7
--	--------------------	-------------

Field Personnel

WESTERN ZONE

Zone 1	Scott Swarner, Specialist I	716-937-6490 Cell 716-713-3541 Email scott.swarner@agriculture.ny.gov
Zone 2	Usman Khan, Specialist I	Cell 585-469-1826 Email usman.khan@agriculture.ny.gov
Zone 3	Vacant, Specialist I	Cell Email @agriculture.ny.gov
Zone 4	Michael Konyak, Specialist I	315-266-7578 Cell 315-879-9500 Email michael.konyak@agriculture.ny.gov
Zone 5	Jamie Comstock, Specialist I	Cell 315-870-2048 Email Jamie.comstock@agriculture.ny.gov
Zone 6	Carl Bechtel, Specialist I	607-748-1282 Cell 315-729-8662 Email carl.bechtel@agriculture.ny.gov

EASTERN ZONE

Zone 7	Matthew Fleming, Specialist I	518-424-5692 Cell 315-415-0364 Email matthew.fleming@agriculture.ny.gov
Zone 8	Corbin Chase, Specialist I	Cell 518-817-6230 Email corbin.chase@agriculture.ny.gov
Zone 9	Louis Tipaldo, Specialist I	845-928-6390 Cell 914-213-5358 Email louis.tipaldo@agriculture.ny.gov
Zone 10	William Nebot, Specialist I	631-949-0454 Cell 914-806-0009 Email william.nebot@agriculture.ny.gov
Zone 10	Stanly Thomas, Specialist I	718-775-0590 Cell 718-490-8362 Email stanly.thomas@agriculture.ny.gov



Quality Manual

Appendix A State Offices and Personnel	Issued: 05/31/2019	Page 6 of 7
--	--------------------	-------------

Zone 11	Antony Joseph, Specialist I	516-580-1993
		Cell 631-241-1440
		Email antony.joseph@agriculture.ny.gov
Zone 11	Joe Esteban, Specialist I	718-343-6773
		Cell 516-287-6969
		Email jose.esteban@agriculture.ny.gov



Quality Manual

Appendix A State Offices and Personnel

Issued: 05/31/2019

Page 7 of 7

Specialist I.D. Numbers

ID No. Last, First (Name)

914	Eric Morabito
919	Joseph, Antony
929	Thomas, Stanly
933	Timar, Steve
935	Tipaldo, Louis
936	Bechtel, Carl
944	Mike Smith
945	Joe Esteban
946	Corbin Chase
947	James Willis
949	Michael Konyak
951	Matthew Fleming
952	Michael Lejeune
953	Jonathan Fox
954	Scott Swarner
955	William Nebot
957	Usman Khan
958	Jamie Comstock
xxx	Jeremy Best

Special Use ID Numbers (for training, expenses, etc)

917	Sikula, Mike
-----	--------------